

THE WORLD'S FINEST Champion 4000 Juicer



TAP nature's bounty.

TASTE nature's goodness.

Use the Champion 4000 Juicer to enhance your diet with a variety of fresh, great-tasting fruit and vegetable juices:

- Vegetable juices
- Fruit juices
- Wheatgrass & leafy greens juices

If variety is the spice of life, then the Champion 4000 Juicer is, quite literally, just what the doctor ordered. Treat your taste buds to sensations like:

- Fruit & Vegetable sauces and purees
- Fruit Whips
- Baby foods
- Nut butters

Table of Contents

Important Safeguards	2
Juicer Parts	3
Juicer Assembly (Exploded View) ..	4
Table 1. Recommended Assembly ...	5
Assembly Instructions	6
Juicing Instructions	14
Homogenizing Instructions	15
Shredding Instructions	16
Disassembly and Cleaning	17
Troubleshooting	18

Some models shipped outside of the U.S. may need wiring changes to adapt to local electrical standards. Contact Plastaket Manufacturing Company for information @ www.championjuicer.com.

Damage or Breakage in Transit

Every Champion Juicer is insured against shipping damage or breakage. Inspect your juicer carefully before initial operation.

In the event of damage or breakage, contact your place of purchase and the shipper for further instructions.

Do not return the juicer or any components to Plastaket Manufacturing Company without prior notification to the shipper or Plastaket Manufacturing Company 209-369-2154.

Important Safeguards

When using the Champion 4000 Juicer, basic safety precautions should always be practiced including the following:

1. Read all assembly and operating instructions prior to use. Incorrect assembly and/or operation of the juicer can cause difficulty in operating the juicer safely and/or efficiently.
2. To protect against electrical hazards, NEVER immerse juicer in water.
3. THIS MACHINE SHOULD NOT BE OPERATED BY CHILDREN.
4. Use only as described in this manual.
5. Do not operate juicer unless fully assembled.
6. The blades in the grinding auger are sharp. Handle carefully.
7. Operate the juicer only at voltage specified.
8. The use of accessories other than those designed and provided by Plastaket is prohibited.
9. Use only the tamper when pushing product down feeding tube.
10. Avoid contacting moving parts.
11. If food becomes lodged in the feeding tube, that cannot be cleared using tamper, turn motor off, unplug juicer cord and disassemble juicer to remove remaining food.
12. During all operations, AVOID EXCESSIVELY

- LARGE PORTIONS of produce that might get stuck in the feeding tube or overload the processing chamber. Generally LESS IS BETTER!
13. TURN OFF JUICER IMMEDIATELY when any unusual sounds, smells or heat are detected. Unplug the juicer cord, disassemble parts, rinse, inspect and reassemble.
 14. THE JUICER SHOULD NOT BE LEFT RUNNING when not juicing or while unattended.
 15. Do not operate the juicer with a damaged cord or plug or after the juicer has been dropped or damaged in any manner.
 16. Always use handle when moving the juicer. Turn off and unplug juicer prior to moving. When carrying juicer, the bottom of the juicer may be supported with other hand, if so desired.
 17. Unplug juicer cord from electrical outlet when not in use and before cleaning.
 18. Do not let the cord hang over edge of table or counter.
 19. Outdoor use of the juicer is not recommended.
 20. Do not place juicer or parts near any hot surface.
 21. **Save these instructions.**

Juicer Parts

TAMPER



SCREEN INSERT



BLANK INSERT



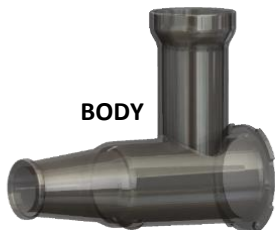
FUNNEL



GRINDING AUGER



BODY



GREENS AUGER



O-RING



DEFLECTOR



JUICING
RESTRICTOR
(GRAY)



OPEN
RESTRICTOR
(ALMOND)

Champion Limited Warranty

Every new Champion Juicer has a five (5) year limited warranty. For more information about the warranty, see the limited warranty card at the back of this manual, call Plastaket Manufacturing Company @ 209-369-2154 or visit our website at www.championjuicer.com.

Juicer Assembly (Exploded View)

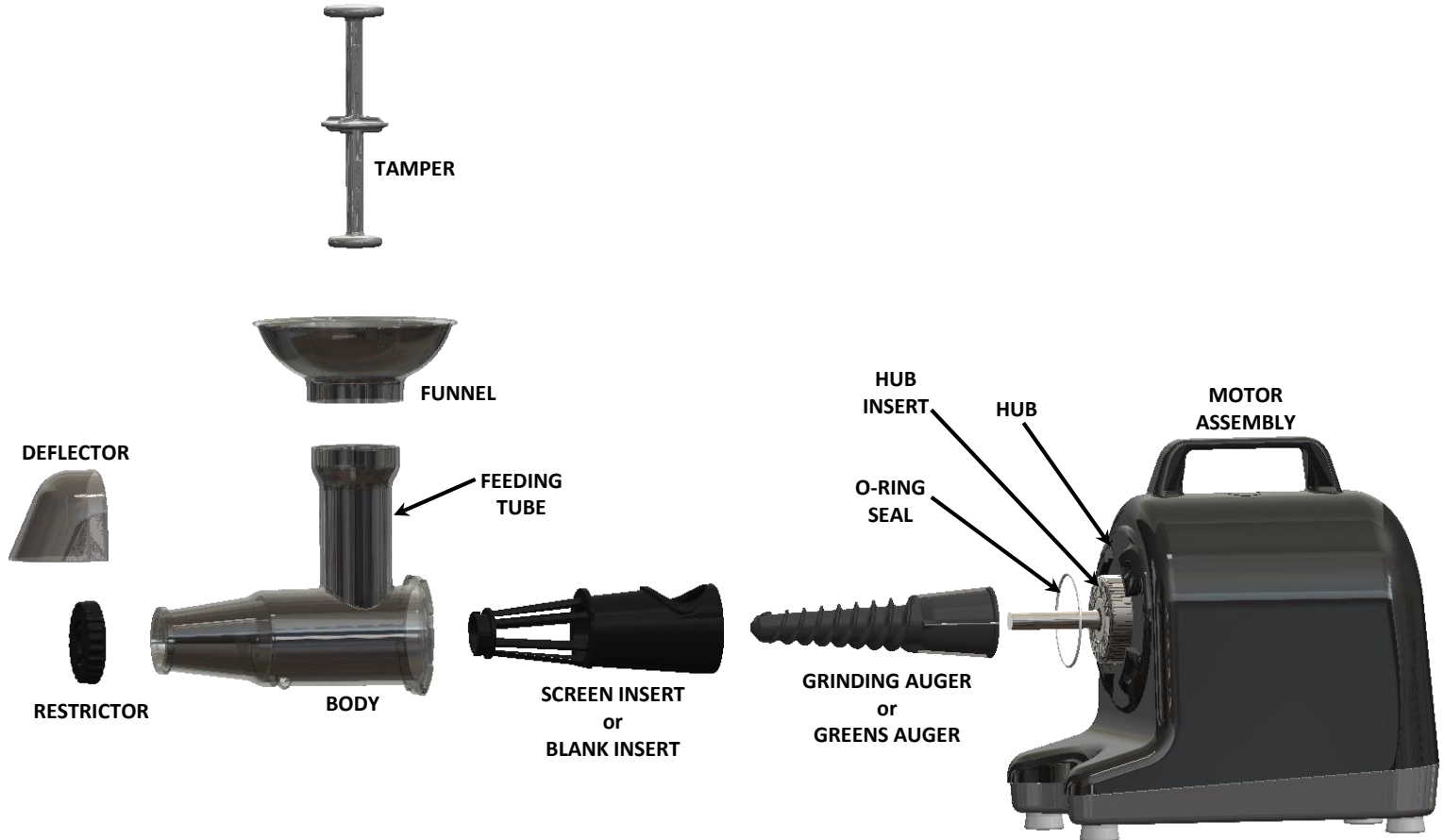


TABLE 1. RECOMMENDED ASSEMBLY (MODEL 4000)

PRODUCT	PRODUCE	AUGER		INSERT		RESTRICTOR	
		GREENS (Green)	GRINDING (Gray)	SCREEN	BLANK	JUICING (Gray)	OPEN (Almond)
JUICE	VEGETABLES		X	X		X	
JUICE	FRUIT		X	X		X	
JUICE	WHEATGRASS	X	*	X		X	
JUICE	GREENS LEAFY	X	*	X		X	
JUICE	GREENS NON-FIBROUS	X	X	X		X	
FRUIT SMOOTHIES	FROZEN FRUIT		X		X	X	X
NUT BUTTERS	NUTS - DRY ROASTED		X		X	X	X
SAUCES	TOMATOES, APPLES, ETC.		X		X	X	X
SOUPS, BABY FOODS	COOKED VEGETABLES		X		X	X	X
SALADS, COLESLAW	CARROTS, BEETS, ONIONS, CABBAGE	X			X		X

* For juice blends that include vegetables / fruits and greens.

Assembly Instructions



1. Apply a light coating of olive or coconut oil to the o-ring seal. Install the o-ring seal over the hub insert.

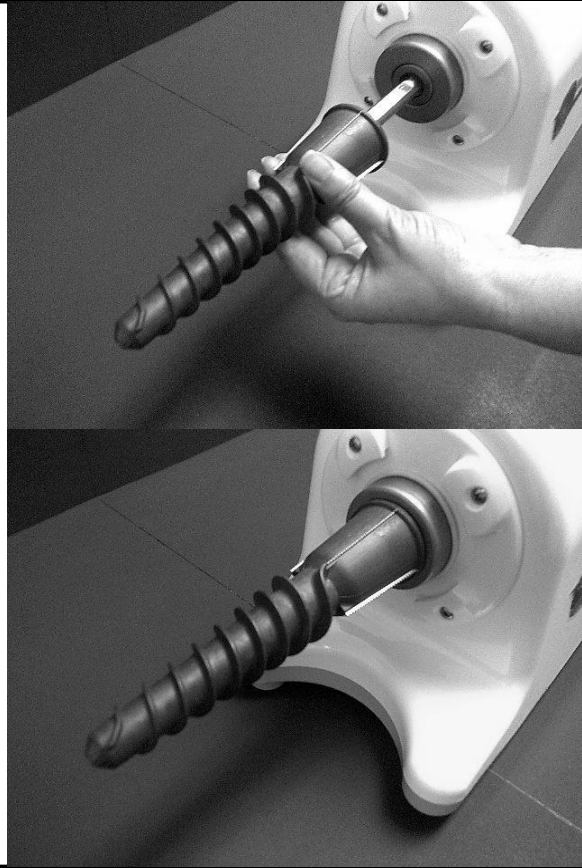
Note: The o-ring seal is initially installed over the hub insert.

2. Apply a light coating of olive or coconut oil onto the motor shaft.

Assembly Instructions

3. Slide the back of auger onto the motor shaft and rotate until the flat in the auger and the flat on the motor shaft are aligned. Continue to slide the auger onto the motor shaft until the auger stops against the end of the motor shaft.

- a. Use the GREENS auger (*green*) for juicing of wheatgrass, most leafy greens and for shredding.
- b. Use the GRINDING auger (*gray*) for juicing of vegetables, such as carrots and beets, for juicing of non-fibrous greens, for juicing of most fruits and for homogenizing.



Assembly Instructions



4. Slide the screen insert into the body so that the insert top opening is in line with the feeding tube. The grooves in the insert must be aligned to the body ribs. If the fit is tight, recheck the alignment. Using your thumb, apply forward pressure to the front of the top opening of the insert to assure that it is completely seated in the body.

- a. Use the screen insert for all juicing operations.
- b. Use the blank insert for non-juicing operations, such as blending, pureeing, homogenizing and shredding.

Note: The screen insert is initially installed inside the body.

Assembly Instructions

5. Install the restrictor to the front of the body as follows:
 - a. Slide the cone end (back) of the restrictor over the front of the body.
 - b. Align the large groove (top) of the restrictor to the tab on the front of the body (tab is located 90 degrees clockwise from the feeding tube looking from the front). Apply light pressure and rotate slowly back and forth until the restrictor slides into the insert's front opening.
 - c. Rotate the restrictor counter-clockwise until it stops.
 - I. Use the juicing restrictor (gray) for all juicing and most homogenizing operations.
 - II. Use the open restrictor (almond) for some homogenizing operations and for shredding.



Assembly Instructions



6. Install the body assembly onto the hub of the motor assembly as follows:

- a. Slide the body assembly over the auger and against the hub of the motor assembly.
- b. With the feeding tube slightly clockwise of vertical, align the body flange openings to the hub lugs and then rotate counter-clockwise against the stops.

Note: The feeding tube must be at the top.

Note: THE JUICER WILL NOT OPERATE UNLESS THE BODY ASSEMBLY IS PROPERLY INSTALLED ONTO THE HUB OF THE MOTOR ASSEMBLY.

Assembly Instructions

7. Install the deflector to the restrictor by aligning the tabs of the deflector with the grooves of the restrictor and sliding the deflector down from the top.



Assembly Instructions



8. Install the funnel onto the feeding tube by sliding it down from the top.



Assembly Instructions

9. The tamper is designed to be used in either direction. Use the tamper with its smaller diameter face down when using the greens auger. Use the tamper with its larger diameter face down when using the grinding auger. Each face of the tamper is identified as “GRINDING” or “GREENS” on the handle.



10. The juicer is fully assembled.

Juicing Instructions

PRODUCE RECOMMENDATIONS

1. Vegetables to juice include root vegetables, wheatgrass and leafy greens.
2. Fruits to juice include most fruits. Fruits such as apples and pears must be fresh and crisp for proper cutting of the peels and maximum juice extraction. If your produce is not fresh, peel removal or replacement with fresher produce is recommended prior to juicing.

PRODUCE PREPARATION

1. Clean all vegetables and fruits thoroughly by soaking in water or brushing and then rinsing.
2. All produce with thick skins, such as oranges or with large pits, such as peaches, should have them removed.
3. All feeding portions should be no larger than 1½ inches cross section to assure adequate clearance in feeding tube.
4. For very fibrous vegetables, such as celery, cut to 2 inches or less in length to prevent wrapping of fibers around grinding auger blades.
5. Wheatgrass should be cut to a length of no more than 4 inches.
6. For other greens, such as kale or chard, remove stalks greater than ¼" diameter and tear or cut pieces to about 3 inches x 3 inches.
7. When juicing grapes, use seedless grapes only.
8. Pomegranates are a special case. In addition to removal of its peel, it should have its internal membranes removed (i.e. juice the seeds only).

JUICING (See Table 1, page 5)

1. Generally, use the grinding auger (gray) for most vegetables and fruits and use the greens auger (green) for wheatgrass and leafy greens. *Note: For juice blends that include vegetables, fruits and greens, use the grinding auger and alternate the types of produce as you juice.*
2. Install the screen insert.
3. Install the juicing restrictor (gray).
4. Installation of the deflector is recommended.
5. Installation of the funnel is recommended when juicing small items, such as cherry tomatoes or grapes.
6. Place bowls under the body assembly to receive the juice and pulp.
7. Turn on the juicer.
8. Use the tamper with its "GRINDING" face (larger diameter end) down when using the grinding auger; use the tamper with its "GREENS" face down when using the greens auger. Using the tamper, push the material down the feeding tube. If the pulp begins to back up in the feeding tube, allow extra time for pulp to expel prior to additional feeding.
9. Re-feeding of the pulp is optional for more yield. Discontinue re-feeding after negligible additional juice is produced.

Homogenizing Instructions

PRODUCE RECOMMENDATIONS

Nut Butters - Use only DRY ROASTED & SHELLED nuts.

Fruit Whips - Fruits such as bananas, strawberries and pineapple make the best whips.

Soups & Baby Food - Vegetables such as potatoes, broccoli and tomatoes.

Sauces – Fruits and vegetables, such as apples, pears, tomatoes and avocados.

PRODUCE PREPARATION

Fruit Whips - Freeze the fruits after skins and/or large seeds are removed. Cut all fruits into feedable size chunks (about 1¼ inch x 1¼ inch x 3 inches or less) prior to freezing.

Soups & Baby Foods - The vegetables need to be skinned and then pre-cooked, preferably in boiling water. Homogenize after they have been allowed to cool.

Sauces - To achieve a smooth, consistent sauce, items with skins, large seeds, cores and/or pits must have them removed. Most vegetables and some fruits should be pre-cooked, preferably in boiling water. Homogenize after they are allowed to cool.

HOMOGENIZING (See Table 1, page 5)

1. Install the grinding auger (gray).
2. Install the juicing restrictor (gray) for the finest texture or the open restrictor (almond) for the coarsest texture.
3. Installation of the deflector is recommended.
4. Installation of the funnel is recommended when homogenizing small items.
5. Place bowl under the front opening of the body.

Note: For small items such as nuts and berries, the feeding tube should be partially filled and the tamper should be inserted prior to starting the motor to prevent material from being flung out by the auger.

6. Turn on the juicer.
7. Use the tamper with its “GRINDING” face (larger diameter end) down to push the material down the feeding tube.

Note: If the processing chamber begins to back up, allow extra time for the homogenized material to expel prior to additional feeding.

Shredding Instructions

PRODUCE RECOMMENDATIONS

Hard vegetables, such as carrots, beets, onions and cabbage.

PRODUCE PREPARATION

1. Clean all vegetables thoroughly by soaking in water or brushing and then rinsing.
2. All vegetables should be cut into easy to feed size; about 1¼ inch maximum cross-section by 3 to 4 inches in length.

SHREDDING (See Table 1, page 5)

1. Install the greens auger (green).
2. Install the blank insert.
3. Install the open restrictor (almond).
4. Installation of the deflector is recommended.
5. Installation of the funnel is recommended when shredding small items.
6. Place the bowl under the front opening of the body assembly.
7. Turn on the juicer.
8. Use the tamper with its “GRINDING” face (larger diameter end) down to push the material down the feeding tube.

Note: If the processing chamber begins to back up, allow extra time for the shredded material to expel prior to additional feeding.

Disassembly & Cleaning Instructions

1. Unplug the juicer.
2. Slide the deflector up and off of the restrictor.
3. Slide the funnel up and off of the feeding tube.
4. Remove the restrictor by rotating clockwise and sliding off of face of the body.
5. Remove the body assembly by rotating clockwise and sliding forward away from the motor assembly.
6. While holding the body assembly in one hand, push on the face of the insert which protrudes beyond the face of the body. The insert should be free from the body. If insert becomes stuck, grab the insert's top opening to pull the insert out from the back of the body.
7. Slide the auger forward and off of the motor shaft.

Caution: The cutting blades of the Grinding Auger are sharp so use a cloth or a paper towel when handling the auger.

8. Remove the o-ring from the hub insert using fingers. *Note: Do not pry the o-ring using a knife or other sharp object as this will damage the o-ring.*
9. Clean, dry and inspect the o-ring.
10. Clean the hub and motor assembly using a soft damp cloth. Pat the surfaces dry using a soft dry cloth.

Note: Do not use anything abrasive as this may permanently dull the finish. Gently towel dry gently or allow to air dry.

Caution: DO NOT SUBMERSE THE MOTOR ASSEMBLY IN WATER.

11. Put a light coating of olive oil or coconut oil on o-ring and re-assemble over the hub insert.
12. Clean the bottoms of the motor assembly feet to prevent build-up of residue.
13. Brush or scrub and then rinse the parts and set aside to air dry or place in dishwasher for final cleaning.

Note: The screen of the screen insert requires additional brushing on the inside and outside to totally remove all particles. Clean the screen insert as follows:

14. After thoroughly rinsing the inside and outside of the screen insert to remove excess debris, use a brush on the inside front and while moving the brush axially forward and backward slowly rotate the insert. Then brush the outside screen surfaces while water is flowing over the area. Repeat inside and then outside brushing as required until all of the screen is clean.
15. Clean the auger using the brush provided. With the grinding auger, brushing of the cutting teeth may be required to remove all debris.

Note: Rinsing the auger may introduce some moisture into the hole at the rear of the auger. Store the auger vertically with its base end down until dry.

16. Do not reassemble until all of the parts are completely dry.

Troubleshooting

SYMPTOM	CAUSE	SOLUTION
Motor does not start.	Body is not properly assembled to hub.	Check assembly.
	Magnet in body flange is missing.	Replace magnet.
	ON/OFF Switch is off.	Turn on switch.
	Power supply is bad.	Check plug and circuit breaker.
	Juicer motor bad.	Replace motor.
	Proximity switch is bad.	Replace proximity switch.
	ON/OFF Switch is bad.	Replace ON/OFF switch.
Motor stalls.	Feeding too much material too fast.	Feed material more slowly.
	Auger worn.	Replace auger.
	Restrictor worn.	Replace restrictor.
Juice/pulp slinging from restrictor.	Deflector not installed.	Install deflector.
Excessive or unusual noise.	Improper assembly.	Re-assemble.
	Part damage.	Replace damaged parts.
Excessive heat in juice or pulp.	Feeding too much material too fast.	Feed material more slowly.
	Restrictor plugged.	Remove restrictor, clear blockage and replace.
	Wrong restrictor installed.	Replace with recommended restrictor.
	Auger worn.	Replace auger.
	Restrictor worn.	Replace restrictor.
Leakage of juice at flange of body.	O-ring missing.	Install o-ring.
	O-ring damaged or worn.	Replace o-ring.
Material backs up in feeding tube.	Feeding too much material and/or too fast.	Reduce rate of feeding.
	Wrong restrictor installed.	Replace with recommended restrictor.
	Restrictor is plugged.	Remove, clean and replace restrictor.
Low Yield	Material being juiced is dry.	Replace with fresh material.
	Restrictor is missing.	Install restrictor.
	Wrong restrictor installed.	Replace with recommended restrictor.
	Nature of material being juiced.	Re-feed material.



THE WORLD'S FINEST

Champion 4000 Juicer

by Plastaket Manufacturing Company Inc.

6220 E. Highway 12, Lodi, California 95240

www.championjuicer.com

Phone: 209-369-2154, Fax: 209-369-7455

